

△ IMPORTANT

A. Safe and reliable operation of Donkey mounting kits require proper installation. The kit must be installed by a technician with sufficient skills to understand the installation and operation of the mount along with the equipment required to install it. Improper installation can result in serious injury or death.

B. This drawing shows typical installations. Many variations of trucks and trailers may be encountered. Contact Quality Corporation's Engineering Department (1-800-383-3018) with any questions regarding the installation of the mounting kit.

C. When installed, this mounting kit must not alter or prevent vehicle compliance to any existing state or federal standards. The chassis manufacturers recommendations should be consulted for compliance.

D. The mounting kit must be attached to a vehicle suitable for carrying the forklift and load in a safe manner. When determining load distributions for the vehicle be sure to include the weight of the Donkey and mounting kit. Also ensure the Donkey and mounting kit do not unweight the front of the vehicle and make driving unsafe.

E. Ensure there is sufficient clearance under the vehicle for the Donkey's drive wheels, chaincases and forks.

F. The vehicle chassis channels and bed long sills should terminate equally at the end of the vehicle.

G. The vehicle chassis and structure supporting the mounting kit must be capable of withstanding a load of 12,000 lbs concentrated 23 inches behind the end of the bed.

H. Bed cross members must be securely fastened to the long sills with full welds and gussets. The crossmembers must be able to carry an upward load of 7000 lbs for each of the Donkey's drive wheels. If the bed crossmembers cannot support this load a tire rest support kit must be used. This kit can be ordered from Quality Corporation's Parts Department (800-383-3018).

I. Welding is required to install the mounting kit. Welders must be qualified to complete out of position welds. Use .035 ER70S-6 solid core welding wire or equivalent. Check the OEM vehicle manual for any special requirements prior to welding. Always disconnect the vehicle battery before welding. Remove, relocate or protect wiring, lights, hoses, deck boards and other parts and materials that may be damaged by heat from welding or cutting. J. Before modifying the vehicle, make certain the modifications meet the specifications of the vehicle and body manufacturers and will not void their warranties.

| | | |
|------|-----------------------|----------------|
| △G | Added 4.5K & 4K CH | 05/21/2008 BG |
| △F | Added notes & weld | 09/12/2007 BG |
| △E | Added Kits. Mod C Dim | 11/22/2006 DJS |
| △D | Revised Dimensions | 04/14/2006 BG |
| △C | Revised Dim's | 12/16/2005 BG |
| Rev. | Description | Rev Date |

| | |
|-------------|------|
| Truck Mount | 1 |
| Next Ass'y | Qty. |

DRAWN
Brian Gorner
CHECKED AND DATE

TOLERANCES

.X=± 0.060
.XX=± 0.030
.XXX=± 0.010

DATE 11/9/2004



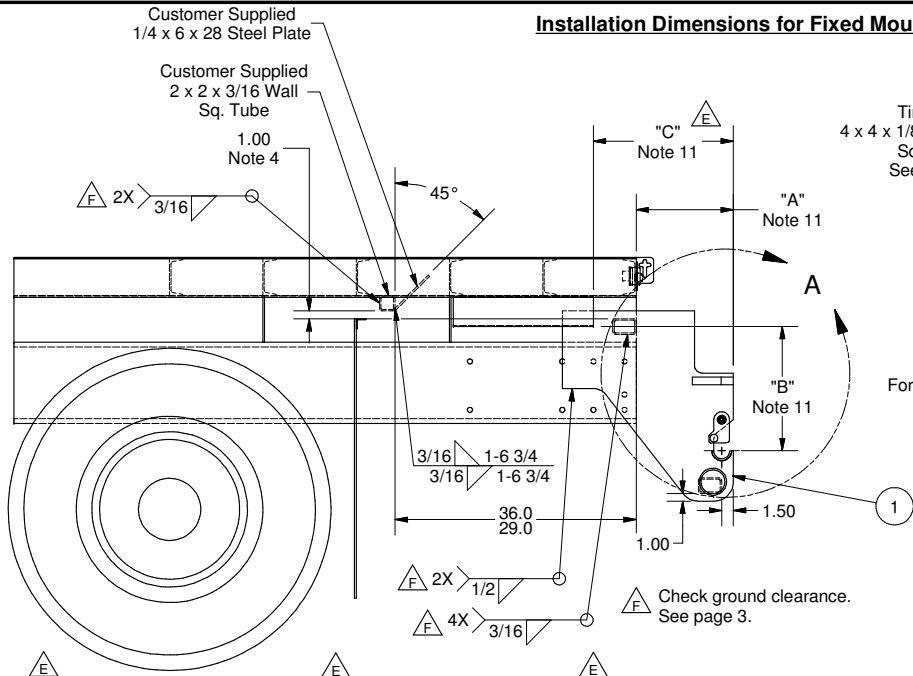
Quality Corporation

2401 S Delaware St.
Denver, CO 80223

| | | |
|-----------|------------------------------------|-----------------------|
| SIZE B | PART DESC Donkey Truck Mounting | PART NO 101455Qtab |
|-----------|------------------------------------|-----------------------|

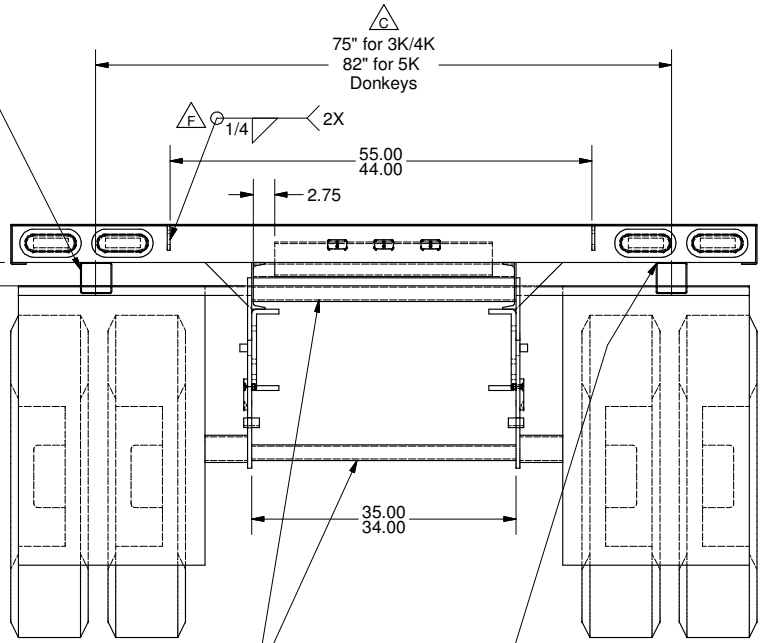
| | |
|------------|--------------|
| SCALE 1:16 | SHEET 1 OF 4 |
|------------|--------------|

Installation Dimensions for Fixed Mounting Plates



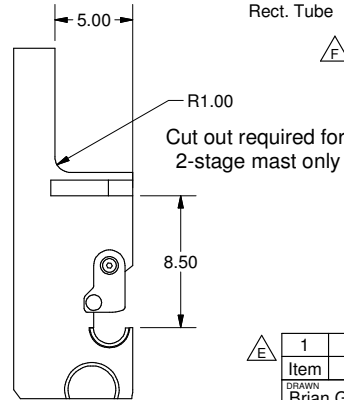
Tire Rest
4 x 4 x 1/8 Wall x 18 Lg.
Sq. Tube
See Note 8

3.00
Fork Opening



Customer Supplied
2 x 3 x 3/16 Wall
Rect. Tube

2X Minimum
On Each Tire Rest




DETAIL A
SCALE 1:8

| Part Number | Kit Number | "A" Dim | "B" Dim | "C" Dim | Drive Tire Size | Notes | Capacity | Mast |
|-------------|------------|---------|---------|---------|-----------------|-------------|----------|--------------|
| 101455QA | 101460N | 10.00 | 18.00 | 18.00 | 27 x 10.50 - 15 | 1, 3, 5, 10 | 3K, 4K | Single Stage |
| 101455QC | 101460N | 12.50 | 18.00 | 18.00 | 27 x 10.50 - 15 | 1, 3, 10 | 3K, 4K | Single Stage |
| 101455QE | 101460N | 14.00 | 18.00 | 18.00 | 27 x 10.50 - 15 | 1, 3, 6, 10 | 4K-DBL | Two Stage |
| 101455QG | 101460N | 14.00 | 18.00 | 26.00 | 27 x 10.50 - 15 | 1, 3, 7, 10 | 4K CH | Single Stage |
| 101455QI | 101460N | 14.00 | 16.00 | 18.00 | 29 x 12.50 - 15 | 2, 9, 10 | 5K | Single Stage |
| 101455QK | 101460N | 16.00 | 16.00 | 18.00 | 29 x 12.50 - 15 | 2, 9, 10 | 5K | Two Stage |
| 101455QM | 101460N | 16.00 | 18.00 | 18.00 | 27 x 10.50 - 15 | 1, 3, 10 | 4K, 4.5K | Two Stage |
| 101455QR | 101460N | 14.00 | 19.00 | 18.00 | 29 x 12.50 - 15 | 1, 10 | 4.5K | Single Stage |
| 101455QT | 101460N | 16.00 | 18.00 | 26.00 | 27 x 10.50 - 15 | 1, 3, 7, 10 | 4K CH | Two Stage |

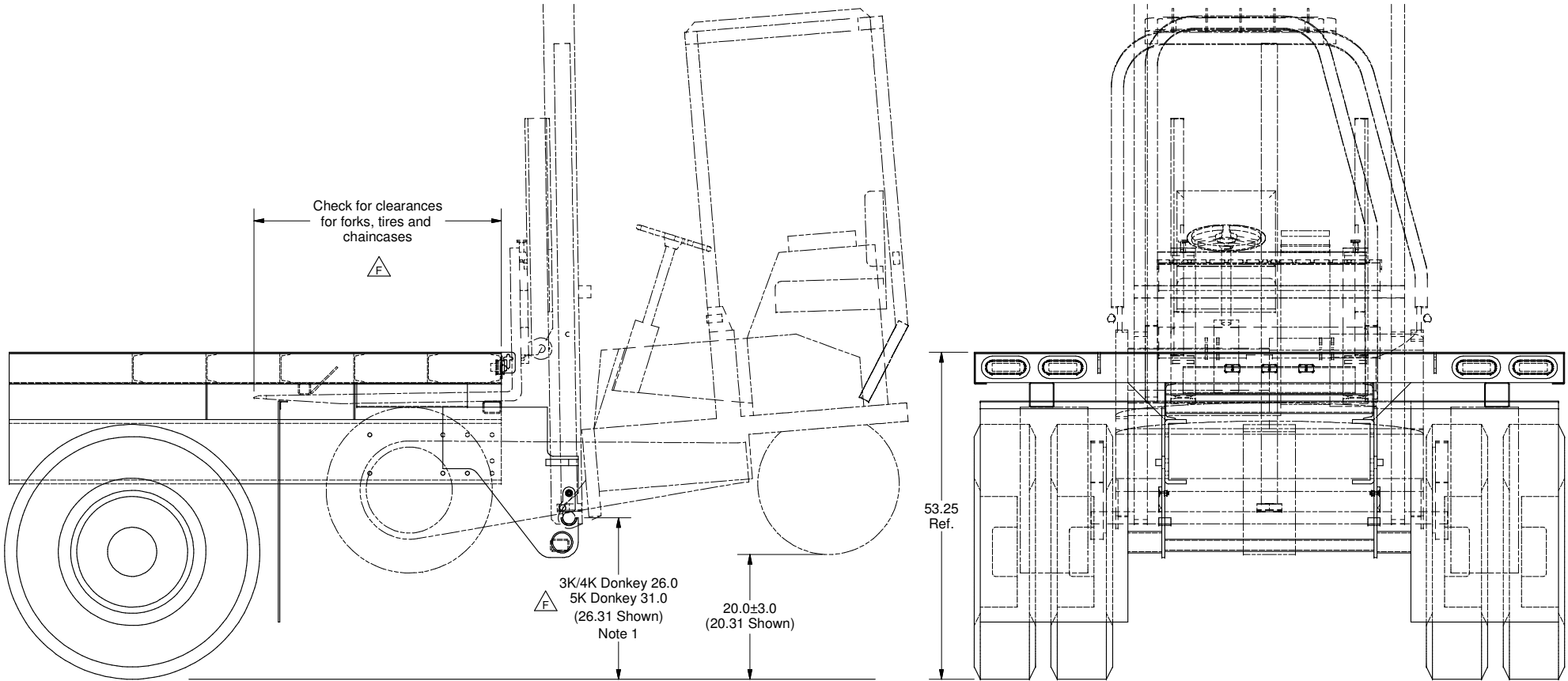
Notes:

- For 29 x 12.50 - 15 Drive Tires, Dim "B" = 19".
For 31 x 15 - 15 Drive Tires, Dim "B" = 20".
- For 31 x 15 - 15 Drive Tires, Dim "B" = 17".
- For Donkeys with optional 3" riser kit, subtract 3" from Dim "B".
- Use 1.00 for pallet forks, 1.50 for 2" thick brick forks, 2.50 for tube forks.
- For Donkeys with sliding tube forks only.
- For Donkeys with double scissor reach only.
- For container handlers only.
- A 4 x 4 tube is typical for most applications. A minimum 4" wide tire rest is recommended. Vary tire rest height to achieve dimension "B".
- For Donkeys with optional Double Reach Forks, add 2.5" to Dim "A".
- For Donkeys with optional Push-Off attachment, add 3.0" to Dim "A".
- Dimension "A" - rear edge of mounting plate to rearmost face of bed where forks will contact
Dimension "B" - tire rest to center of mounting pocket
Dimension "C" - rear edge of mounting plate to rear edge of tire rest.

| 1 | 101460N | Kit, Large Plate Mounting | 1 |
|-----------------------|-------------|---|-----------------------|
| Item | Part Number | Description | Qty. |
| DRAWN Brian Gorner | |  Quality Corporation 2401 S Delaware St. Denver, CO 80223 | |
| CHECKED AND DATE | | | |
| TOLERANCES | | | |
| .X=± 0.060 | | SIZE | PART NO |
| .XX=± 0.030 | | B | Donkey Truck Mounting |
| .XXX=± 0.010 | | SCALE | 1:16 |
| DATE | 11/9/2004 | SHEET 2 OF 4 | |

| | |
|-------------|------|
| Truck Mount | 1 |
| Next Ass'y | Qty. |

Typical Donkey Installation
(4K Single Stage Donkey Shown)



NOTES:
 △_F 1. Use the dimensions shown as a starting point, adjust as required to achieve a proper fit.

DRAWN
 Brian Gorner

CHECKED AND DATE

TOLERANCES
 .X=± 0.060
 .XX=± 0.030
 .XXX=± 0.010

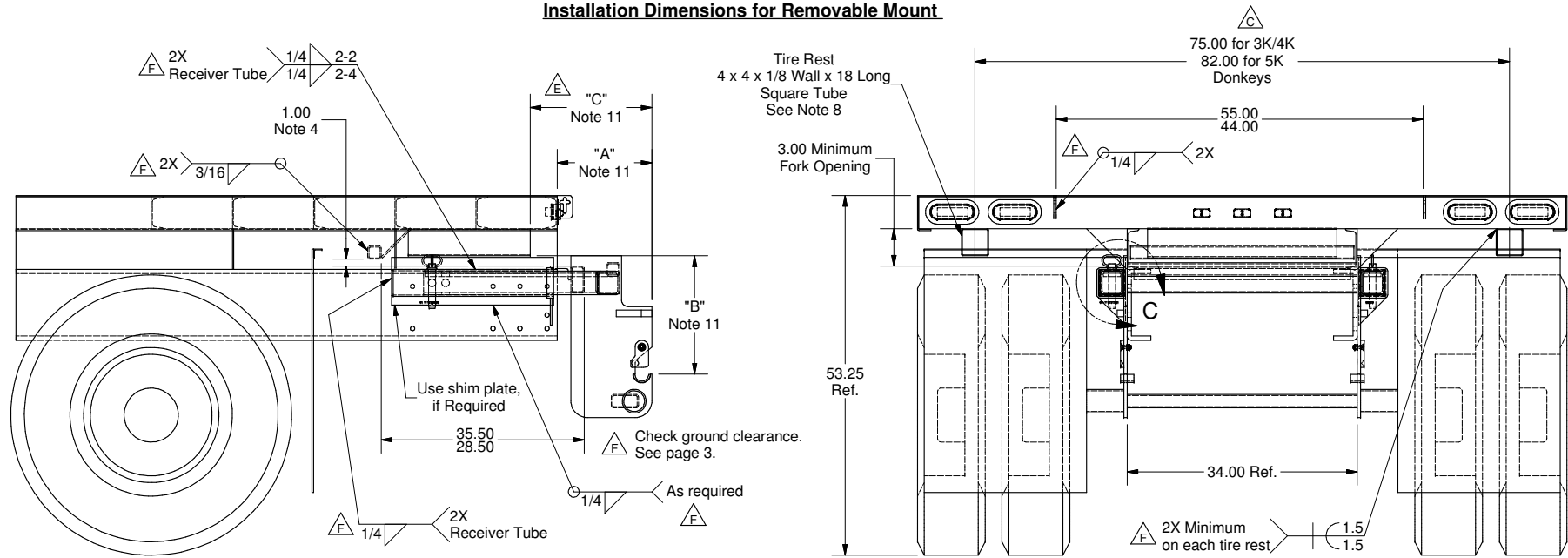


Quality Corporation

2401 S Delaware St.
 Denver, CO 80223

| | | | | | | | |
|-------------|------|------|-----------|-----------|-----------------------|--------------|------------|
| Truck Mount | 1 | DATE | 11/9/2004 | SCALE | 1:16 | SHEET 3 OF 4 | |
| Next Ass'y | Qty. | | | | | | |
| | | SIZE | B | PART DESC | Donkey Truck Mounting | PART NO | 101455Qtab |

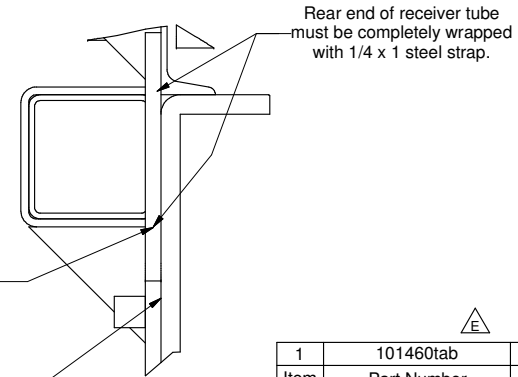
Installation Dimensions for Removable Mount




| Part Number | Kit Number | "A" Dim | "B" Dim | "C" Dim | Drive Tire Size | Notes | Capacity | Mast |
|-------------|------------|---------|---------|---------|-----------------|-------------|----------|--------------|
| 101455QB | 101460 | 10.00 | 18.00 | 18.00 | 27 x 10.50 - 15 | 1, 3, 5, 10 | 3K, 4K | Single Stage |
| 101455QD | 101460 | 12.50 | 18.00 | 18.00 | 27 x 10.50 - 15 | 1, 3, 10 | 3K, 4K | Single Stage |
| 101455QF | 101460 | 14.00 | 18.00 | 18.00 | 27 x 10.50 - 15 | 1, 3, 6, 10 | 4K-DBL | Two Stage |
| 101455QH | 101460 | 14.00 | 18.00 | 26.00 | 27 x 10.50 - 15 | 1, 3, 7, 10 | 4K CH | Single Stage |
| 101455QJ | 101460 | 14.00 | 16.00 | 18.00 | 29 x 12.50 - 15 | 2, 9, 10 | 5K | Single Stage |
| 101455QL | 101460CA | 16.00 | 16.00 | 18.00 | 29 x 12.50 - 15 | 2, 9, 10 | 5K | Two Stage |
| 101455QN | 101460 | 16.00 | 18.00 | 18.00 | 27 x 10.50 - 15 | 1, 3, 10 | 4K, 4.5K | Two Stage |
| 101455QS | 101460 | 14.00 | 19.00 | 18.00 | 29 x 12.50 - 15 | 1, 10 | 4.5K | Single Stage |
| 101455QU | 101460 | 16.00 | 18.00 | 26.00 | 27 x 10.50 - 15 | 1, 3, 7, 10 | 4K CH | Two Stage |

Notes:

- For 29 x 12.50 - 15 Drive Tires, Dim "B" = 19".
For 31 x 15 - 15 Drive Tires, Dim "B" = 20".
- For 31 x 15 - 15 Drive Tires, Dim "B" = 17".
- For Donkeys with optional 3" riser kit, subtract 3" from Dim "B".
- Use 1.00 for pallet forks, 1.50 for 2" thick brick forks, 2.50 for tube forks.
- For Donkeys with sliding tube forks only.
- For Donkeys with double scissor reach only.
- For container handlers only.
- A 4 x 4 tube is typical for most applications. A minimum 4" wide tire rest is recommended.
Vary tire rest height to achieve dimension "B".
- For Donkeys with optional Double Reach Forks, add 2.5" to Dim "A".
- For Donkeys with optional Push-Off attachment, add 3.0" to Dim "A".
- Dimension "A" - rear edge of mounting plate to rearmost face of bed where forks will contact
Dimension "B" - tire rest to center of mounting pocket
Dimension "C" - rear edge of mounting plate to rear edge of tire rest.



| | | | |
|-----------------------|-------------|---|-----------------------|
| 1 | 101460tab | Removable Mount Kit | 1 |
| Item | Part Number | Description | Qty. |
| DRAWN Brian Gorner | |  Quality Corporation 2401 S Delaware St. Denver, CO 80223 | PART NO 101455Qtab |
| CHECKED AND DATE | | | |
| TOLERANCES | | SIZE | SCALE |
| .X=± 0.060 | | B | 1:16 |
| .XX=± 0.030 | | PART DESC | SHEET 4 OF 4 |
| .XXX=± 0.010 | | Donkey Truck Mounting | |
| DATE | 11/9/2004 | | |